

CERTIFICATE OF LOCATION OF GOVERNMENT CORNER

NORTHEAST Corner of Section 4, Township 108, Range 42, 5TH P.M.

STATE OF MINNESOTA, County of MURRAY

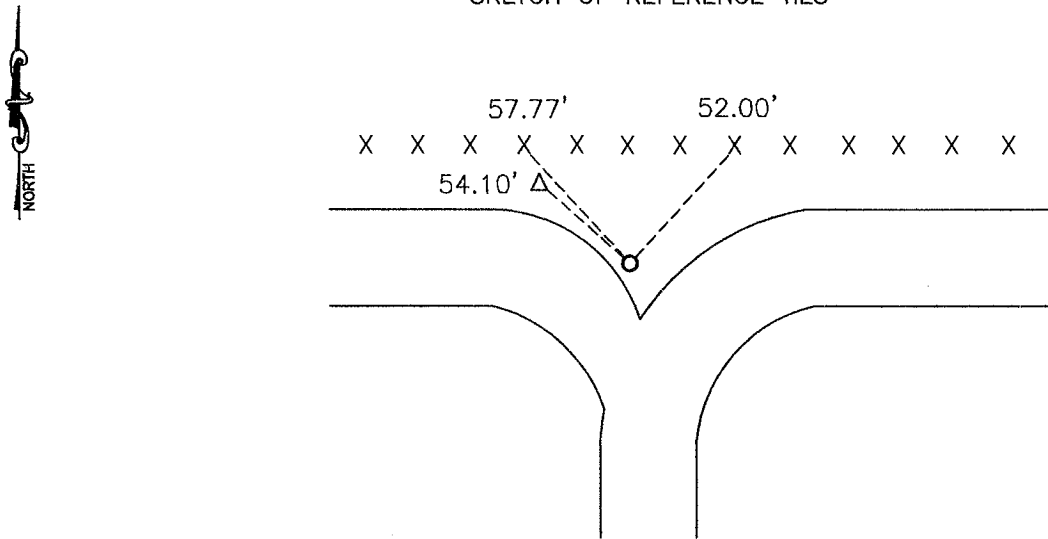
At the corner location shown on the sketch:

On 04-30-2008 found a 3/8" IRON
DATE

left monument as found, lowered monument, removed monument (explain)

On 05-05-2008 placed a 5/8" IRON WITH SEAL #43844
DATE

SKETCH OF REFERENCE TIES



Minnesota State Plane Coordinate
System Murray County Datum
NAD83 (1996)
N: 226952.181
E: 469140.809

Nail and bottle cap in wooden post NW 57.77'
Nail and bottle cap in wooden post NE 52.00'
Top center of pedestal NW 54.10'

Statement of evidence relative to this corner location is on back of page.

I hereby certify that this document and the data contained herein was prepared by me or under my direct supervision

James V. Johnson 1/26/09
SIGNATURE DATE

Registration No. 43844

Land Surveyor, Professional Engineer
 County Surveyor, County Engineer

OFFICE OF THE COUNTY RECORDER
County of _____

I hereby certify that this document was filed in the Co. Recorders office at _____ .M on the _____ day of _____ A.D. 20 _____

County Recorder *James V. Johnson*, Deputy

DOCUMENT NO. JUL 10 2009

Statement of Evidence

In 1858, W. J. Neely did the original survey of the north line of the township.

On June 26, 1928, the county surveyor found a stone at the corner.

On April 30, 2008, Bueltel-Moseng Land Surveying found an unrecorded $\frac{3}{8}$ " iron within 0.3 feet of the proportionate recorded distance from the southeast corner of section 34-109-42. We removed it and dug with a backhoe, nothing else was found. We then set a $\frac{5}{8}$ " iron with seal #43844 on line between the south quarter corner of 34-109-42 and the southeast corner of 34-109-42, and on line with the east quarter corner of 4-108-42 and the $\frac{3}{8}$ " iron.